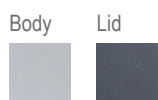




## Color



manufactured by  
Cervic Environment



INDOOR



OUTDOOR



Easy Empty



## AVAILABLE LIDS



Open Top



Self and soft  
closing flap

## COLLECTION SYSTEM FRONTAL DOOR



Sliding Inner  
ring bag holder

## EXAMPLES OF RECYCLING STATIONS

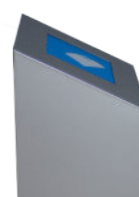


Recycling Station  
3 types of waste

## DETAILS



Detail of  
self-closing flap



Detail of  
side view

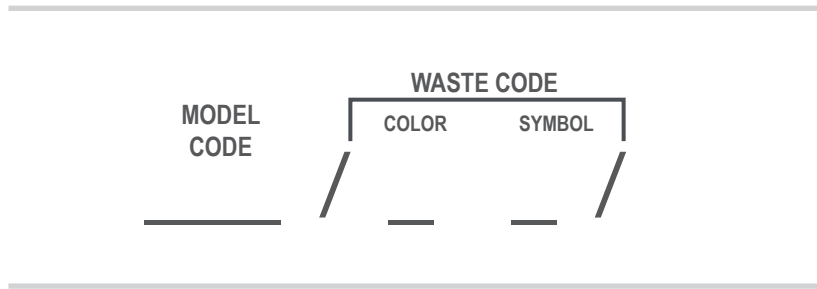


Transparent  
polycarbonate window



- The Altea Security bin has a front facing access door containing a polycarbonate transparent window allowing visibility of the contents.
- The unit is also modular in order to combine with other units creating a larger recycling station (joining kit included).
- Capacity: 75L.
- Ergonomic collection system: Sliding inner ring bag holder with elastic band which can be horizontally foldout by guides.
- Available lids: open or self-closing flap.
- The access door has a magnet closure.
- Easy emptying system: our bins must be safe, ergonomic and clean. This bin has been designed and produced with an ergonomic and efficient emptying system which guarantees the extraction of the bag without risk of ripping.
- Made of 1 and 2 mm cold rolled steel plates which have been hot dip galvanized. Transparent frontal window made of 2 mm transparent polycarbonate (PC) sheet.
- It includes a thermo-heating polyester powder coated finish.
- Hinges and inner ring bag holder made of zinc plated steel.
- Can be fixed to the ground with 2 M6 expansion bolts (not included).
- Accessories: frontal waste adhesives and ground anchor bolts kit.
- Suitable to be used indoor and outdoor under normal weather conditions. In case of extreme weather conditions, such as high salinity, temperature or humidity, an additional special treatment can be included. Check extra cost and MOQ.
- Guaranteed reliability: this product has satisfactorily exceeded functionality and endurance tests under real environmental and usage conditions.



To process your order, all the codes that create the detailed reference must be chosen.



### MODEL CODE

Code		Description
MEC414103		Altea Security bin 75L Frontal Door Open Top-Inner Ring
MEC414113		Altea Security bin 75L Frontal Door Self-closing flap-Inner Ring

---

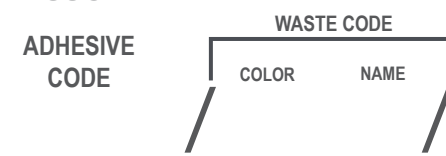
### COLOR WASTE CODE



### WASTE SYMBOL CODE



## FRONTAL ADHESIVE ACCESSORY



### ADHESIVE CODE

Reference	Description
MADH009	Frontal Waste Adhesive Type 5 (1 side)

### WASTE COLOR CODE



### WASTE NAME CODE

Code	English	Code	Deutsche	Code	Français
009	Paper	037	Papier	046	Papier - Carton
028	Bottles & Cans	038	Gelber Sack	047	Emballages recyclables
029	Organic	039	Bioabfall	048	Organique
030	Glass	040	Glas	049	Verre
031	Non-Recyclables	041	Restmüll	050	Autres déchets
032	General Waste	042	Abfall	051	Déchets divers
033	Plastic Bottles	043	Plastik	052	Bouteilles plastiques
034	Cans	044	Metall	053	Canettes
035	Mixed Recycling	045	Rest		
036	Plastic				
Code	Nederlands	Code	Italiano	Code	Suomi
037	Papier	060	Carta	070	Paperi
054	PMD	061	Plastica - Lattine	071	Muovi
055	Bio	062	Umido	072	Biojäte
040	Glas	063	Vetro	073	Lasi
056	Restafval	064	Secco	074	Kuivajäte
057	Ander afval	065	Indifferenziata	075	Sekajäte
036	Plastic	066	Plastica	076	Energijäte
058	Metaal	067	Lattine	077	Metalli
059	GFT	068	Vetro - Lattine		
		069	Organico		

Code	Norsk
078	Papir
079	Pant
080	Matavfall
081	Glass- og metallemballasje
082	Restavfall
083	Avfall
084	Plastemballasje

Code	Português
037	Papel
100	Embalagens
101	Organico
026	Vidro
102	Indiferenciados
103	Diversos
007	Plástico
098	Metal

Code	Magyar Nyelv
085	Papír
086	Vegyés
087	Szerves
088	Üveg
089	Toner
090	Kommunális hulladék
091	Műanyag
092	Fém


Code	Polski
037	Papier
093	Segregowane Suche
094	Bio odpady
095	Szkło
096	Pozostałe odpady
097	Zmieszane odpady
043	Plastik
098	Metal
099	Plastik Metal

## EXTRA FINISH TO IMPROVE THE CORROSION RESISTANCE

Reference	Extra finish	Description
<b>XT</b>	*Extreme finish	Only for products made of galvanized steel. Additional treatment with anticorrosive primer rich in zinc that meets the requirements of the corrosion category C5 I, according to the rule DIN EN ISO 12944

\*Check extra cost. MOQ required.

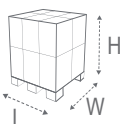
## ACCESSORIES

Reference	Accessory	Description	Color	Material
MEC41AC2		Kit ground anchor bolts (2 pcs) Altea bin	Expanding bolts M6	Zinc-plated Steel

## PACKAGING AND LOGISTIC DETAILS

### Packaging details without pallet

Description	u. / packaging	Packaging type	Weight	Volume	Packaging mm*		
					Length	Width	Height
Altea Security	1	carton box	20 Kg	0,13 m <sup>3</sup>	393	345	955



### Packaging details with pallet

Description	u. / pallet	Type of packaging	Pallet dimensions mm*			Pallet weight	Volume
			Length	Width	Height		
Altea Security	18	carton box	1200	1000	2180	375 Kg	2,61 m <sup>3</sup>

\*The logistic could be changed in case of the loading of different products in the same pallet.  
In case of full containers, trailers or trucks, ask for logistic optimization.